



# Multilateral Assessment



**NEW ZEALAND**



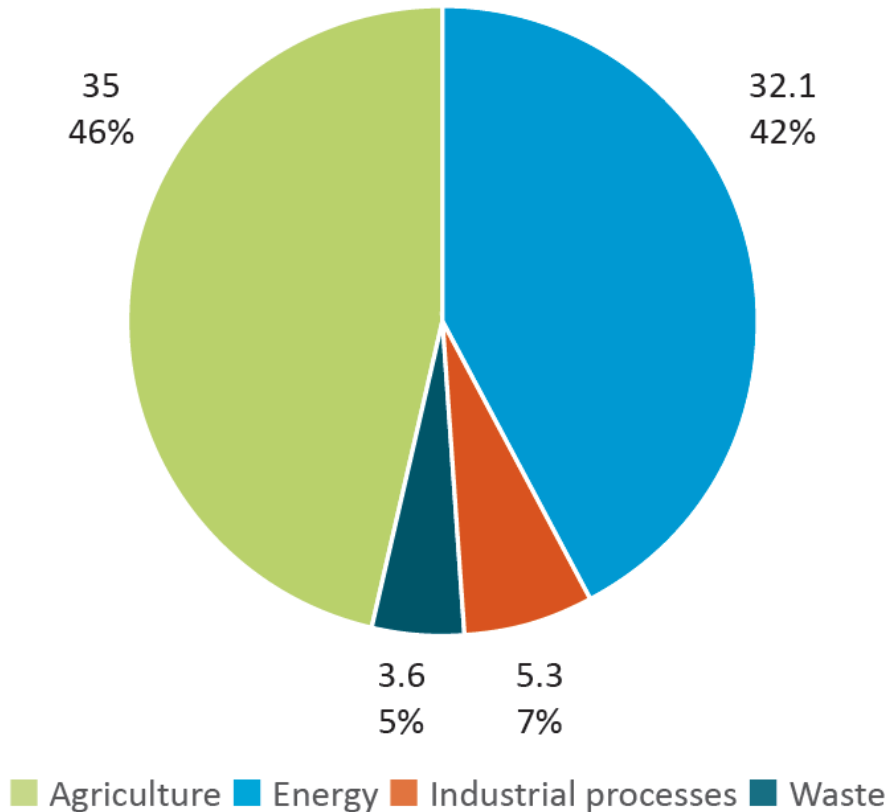
***New Zealand will meet its Kyoto Protocol first  
commitment period target of reducing  
emissions to 1990 levels over CP1***





# New Zealand has a unique emissions profile

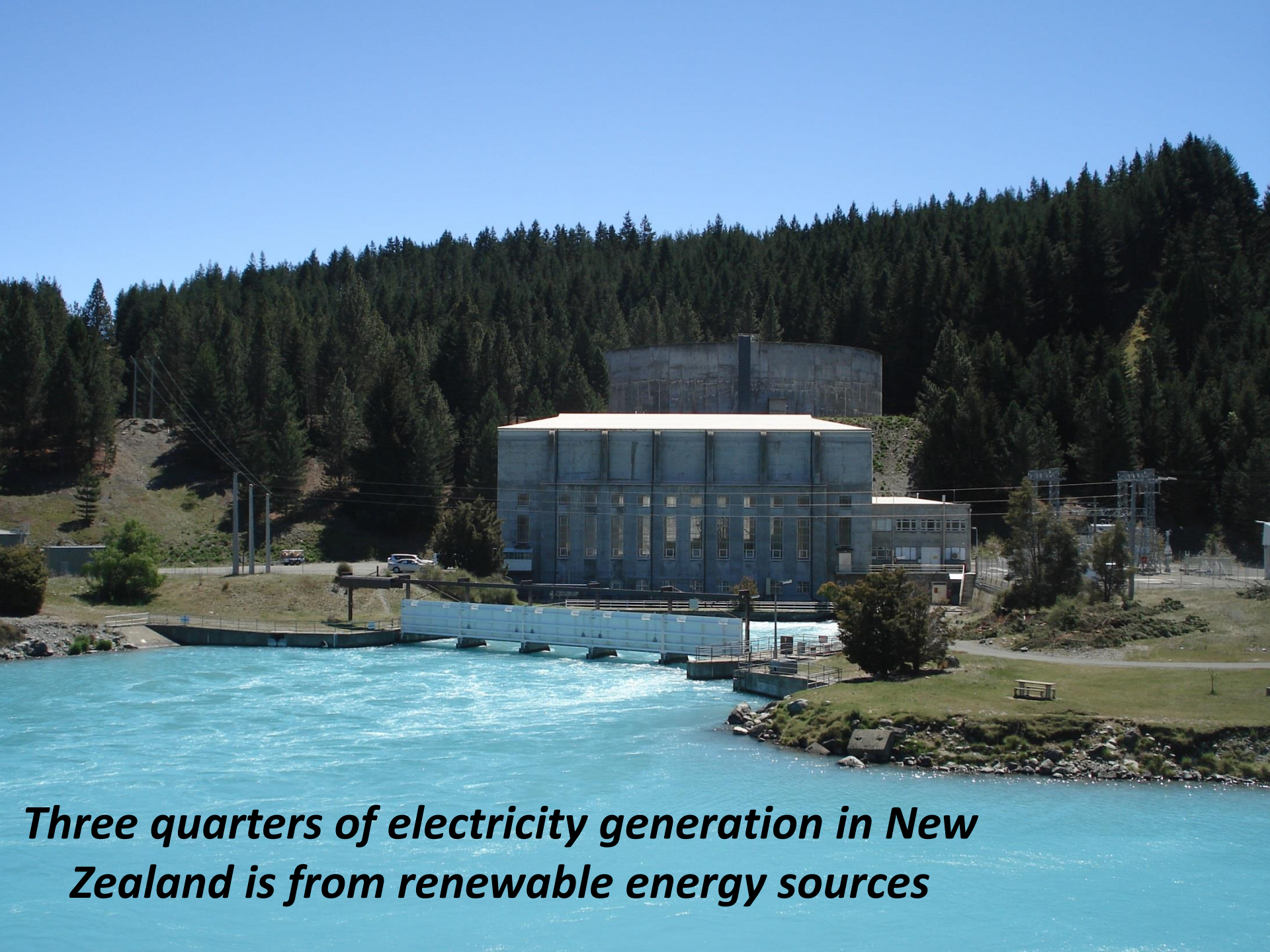
**Figure 1:** New Zealand's greenhouse gas emissions in 2012 (by sector, in million tonnes of CO<sub>2</sub> equivalent)



**Note:** Emissions from the solvent and other product use sector are not represented in this figure due to the small size of emissions from this sector. Emissions from the LULUCF sector are not included in the estimate of total emissions so are also not represented in this figure.







***Three quarters of electricity generation in New Zealand is from renewable energy sources***









***The emissions intensity of the agriculture sector has decreased by approximately 1% annually since 1990***







***New Zealand's population increased by about 30% since 1990***



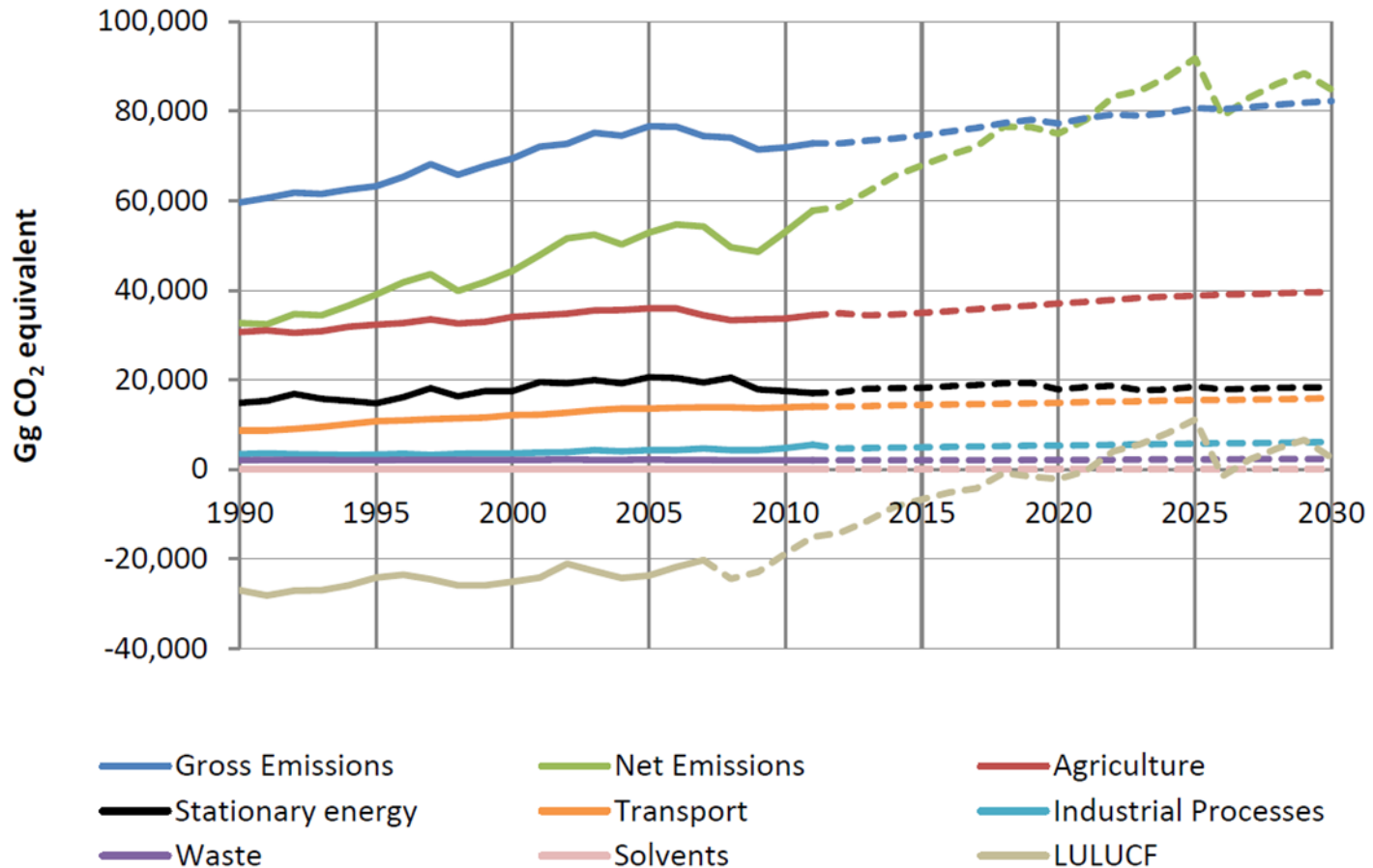








# *New Zealand's projected emissions and removals to 2030*



**Figure 1.1:** New Zealand's actual and projected emissions 1990 – 2030 under the UNFCCC

**Note:** Gross emissions exclude the LULUCF (forestry) sector. LULUCF projections are based on a mid-point emissions scenario.







*The emissions intensity of the economy has decreased by 29.3 % since 1990*















***New Zealand is well on track to meet its 2020 target of 5% reduction in emissions on 1990 levels***

